

FEATURES

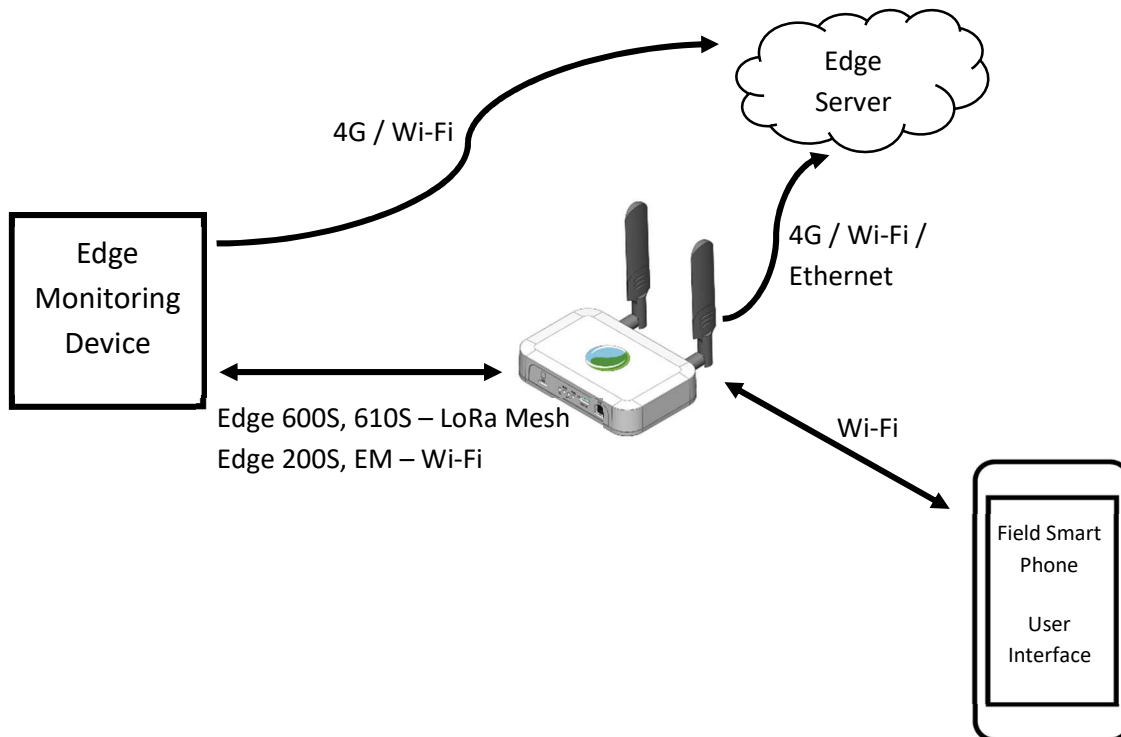
- Connects to the Edge devices through LoRa and Wi-Fi
- Pairs with smartphones, tablets, and laptops via Wi-Fi for commissioning and diagnostics of Edge devices
- Simple web-based User Interface to display diagnostic and real-time power quality data, and to issue commands to Edge devices wirelessly
- Functions as a gateway to the Edge Cloud using Ethernet, Wi-Fi, 4G or LoRa
- Powered by an external 5V 2A supply through a standard USB Type A connection
- PoE Powered Device. 802.3at, Class 1 – Type 3



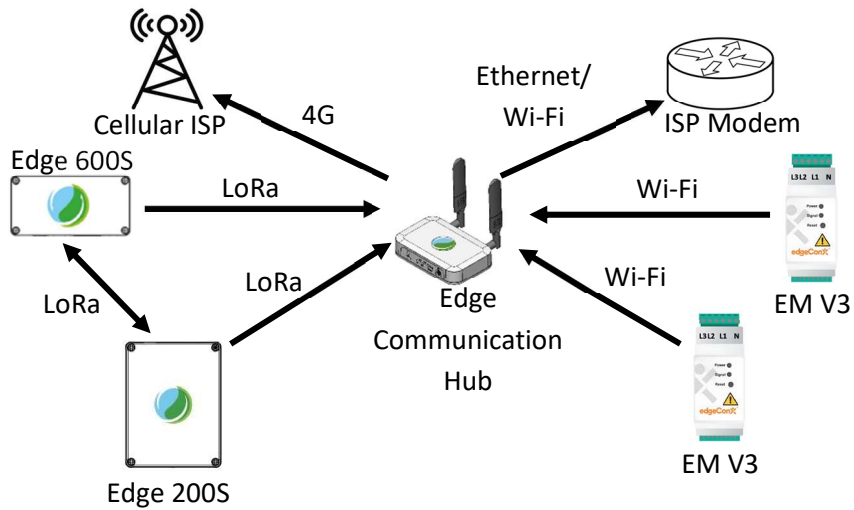
DESCRIPTION

The Edge Communication Hub functions as a gateway that relays real-time power quality and energy data of Edge devices to the Edge central cloud server. It is also used to diagnose and monitor the performance of Edge devices in the field. This device offers multiple connectivity options including LoRa, Wi-Fi, Ethernet, and 4G Cellular for seamless integration with Edge Products and aligns with the roadmap.

Powered by an external 5V supply via a standard USB connection, the device ensures mobility and ease of use. It is also a PoE Powered Device (802.3af compliant) for streamlined wired power and connectivity. It can be paired with smartphones, tablets, and laptops via Wi-Fi. The device serves a web based user interface via Wi-Fi to the paired device that can display diagnostic data, real-time power quality data, and can also issue commands to Edge devices directly without connecting to the Edge central Cloud Server.

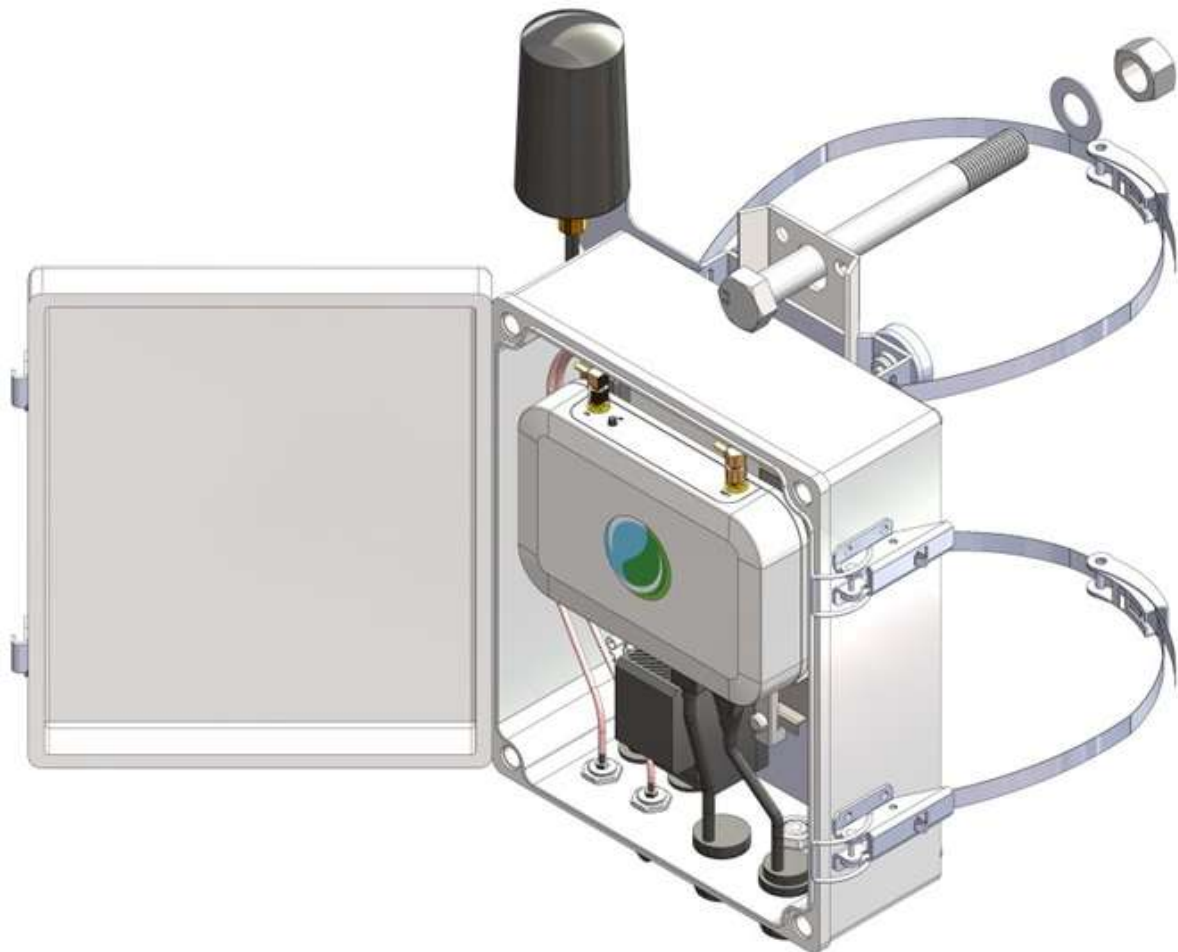


EDGE COMMUNICATION HUB AS A GATEWAY



OUTDOOR ACCESSORIES

The Edge Communication Hub can also be configured for outdoor installations. The base unit can be installed inside an IP66 rated outdoor enclosure. The enclosure includes panel type connectors for the external antenna, PoE RJ45 ethernet receptacle, AC input for the included internal AC-DC PSU, USB Type A Input. The enclosure can be mounted magnetically on a flat metallic surface or with a steel belt around a pole.



Electrical Specifications

Rated Input	5V / 2A, USB Type A; PoE Class 1, Type 3, 15.4W
-------------	---

Connectivity

Communications	Wi-Fi, Cellular (4G CAT-1), Ethernet, Edge LoRa Mesh
----------------	--

Gateway connection to Edge central IoT Cloud server

Communications Architecture	Wi-Fi serves as Device commissioning and gives access to user interface
-----------------------------	---

Edge LoRa Mesh allows connection to Edge Devices LoRa Network

Compatible Hardware	EdgeSensor 200 Series, 600 Series and 610 Series, – LoRa Mesh EdgeSensor 200 Series, Energy Monitor v3 – Wi-Fi
---------------------	---

Mechanical and Environmental Specifications for Indoor Base Unit

Dimensions	L 100 x W 150 x H 30mm
------------	------------------------

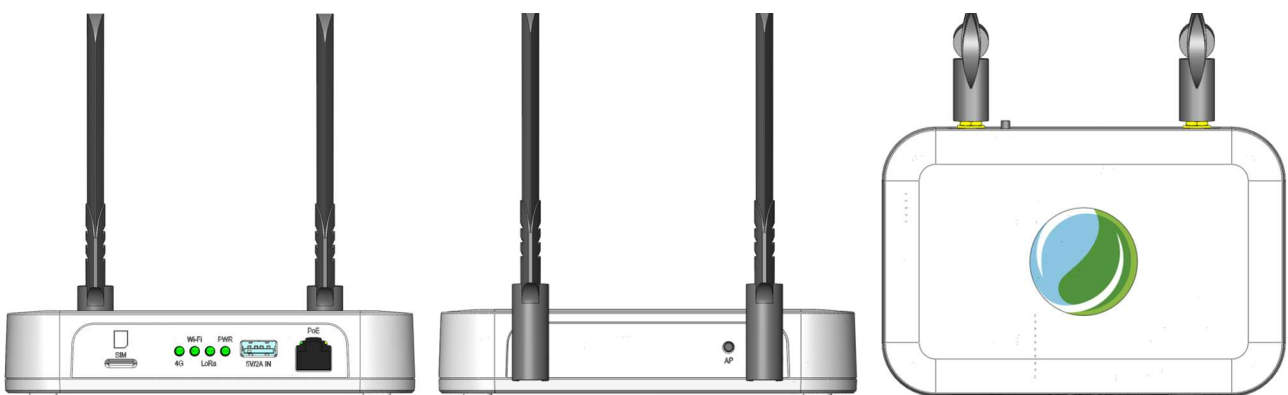
Weight	270g
--------	------

IP Rating	IP2X
-----------	------

Operating Temperature and Humidity	-10°C to 60°C, 0-95% RH non-condensing
------------------------------------	--

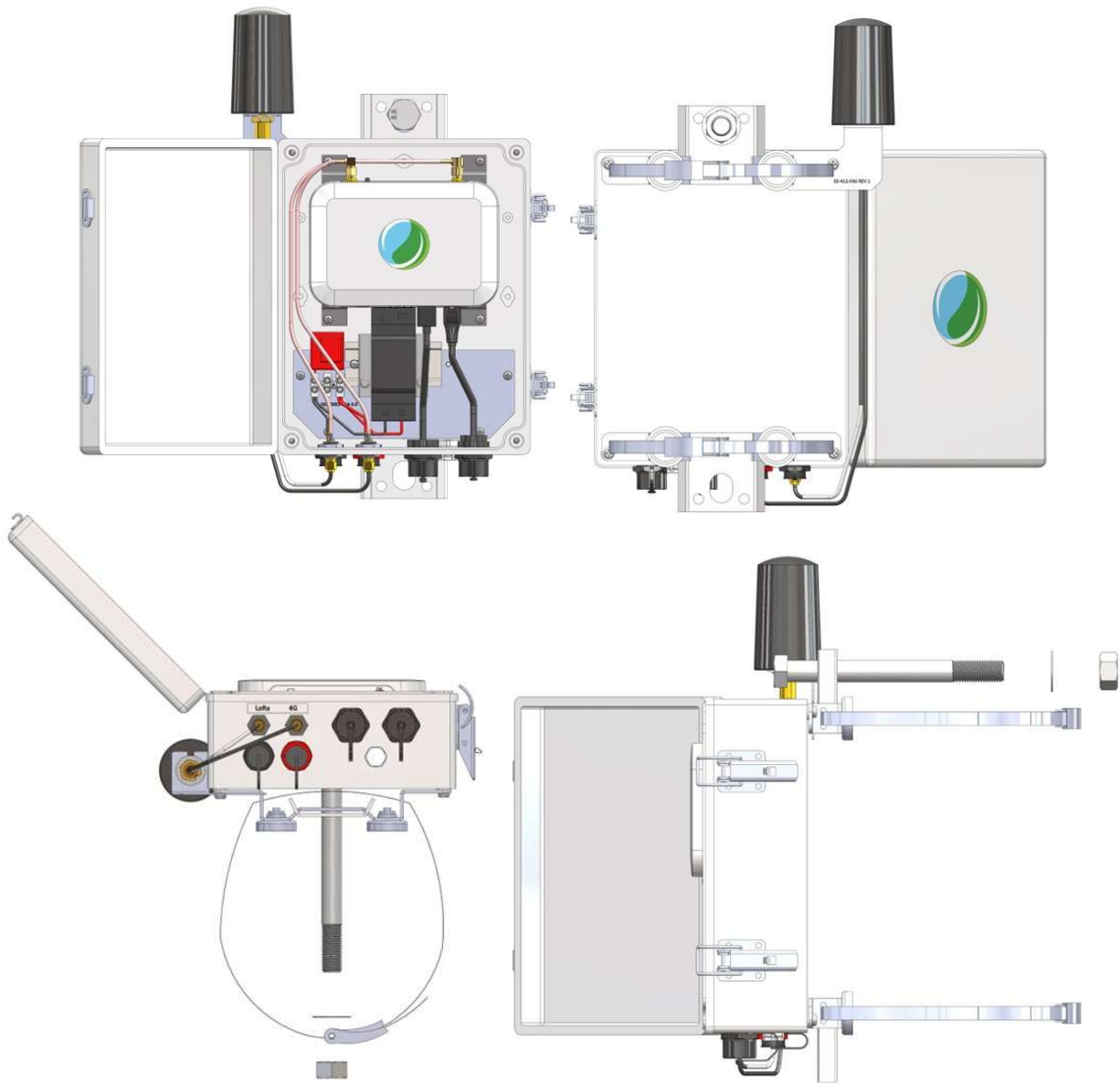
Storage Temperature	-30°C to 80°C
---------------------	---------------

Operating Altitude	1000m
--------------------	-------



Specifications for Outdoor Accessories Bundle

Dimensions	<i>L 250 x W 200 x H 100mm</i>
Weight	<i>3kg</i>
IP Rating	<i>IP66</i>
Rated Input	<i>100-250Vac; 5V / 2A, USB Type A; PoE Class 1, Type 3, 15.4W</i>
Frequency for AC Input	<i>50/60Hz</i>
Max. Rated Power	<i>10W Max.</i>
Overvoltage Category	<i>Cat. III</i>
Operating Temperature and Humidity	<i>-10°C to 50°C, 0-95% RH non-condensing</i>



Edge Communication Hub Ordering Information	
Indoor Unit	
Edge Part Number	Description
EE-502-0003	Edge Communication Hub Indoor Unit
Outdoor Accessories Bundle	
Edge Part Number	Description
EE-702-0001	Communication Hub Outdoor Enclosure with PSU and Mounting Accessories <ul style="list-style-type: none">• Outdoor Enclosure with Internal Cabling (IP66)• Power Supply with Internal Mounting and Cabling (25 W)• Universal mount and L189mm bracket Accessory BOM

Contact

EDGEZERO PTY LMT

<https://edgezero.co/>