

Zero Doubt Pilot Programs

De-risk your energy transition with Edge Zero's real-time low-voltage network monitoring. Edge's advanced technology provides unparalleled insights into power quality and network performance, ensuring you can proactively address potential distribution network issues before they escalate. Edge Zero has designed an easy-to-implement, customizable pilot program to meet your utility's unique needs, giving you the flexibility to adapt as your electric grid evolves.

Grid Operators Face Major Low Voltage Network Challenges

<p>Lack of Situational Awareness</p> <p>Inability to view data on power flows, voltage, power quality or other indicators on the low voltage network in real-time</p>	<p>Increasing DER Penetration</p> <p>Unpredictable new sources of distributed load and generation, caused by assets like electric vehicles and solar PV</p>	<p>Costly Monitoring Upgrades</p> <p>Medium-term pressure to upgrade technologies, such as AMI, without having realized full benefits of the current deployment</p>	<p>Pressure to Generate OpEx Savings</p> <p>A more complex grid requires investment in maintenance, technological integration and customer satisfaction & safety</p>	<p>Extreme Weather & Customer Safety</p> <p>Aging infrastructure poses risks to the communities in which it is sited, particularly during wildfire and severe storm seasons</p>
--	--	--	---	--

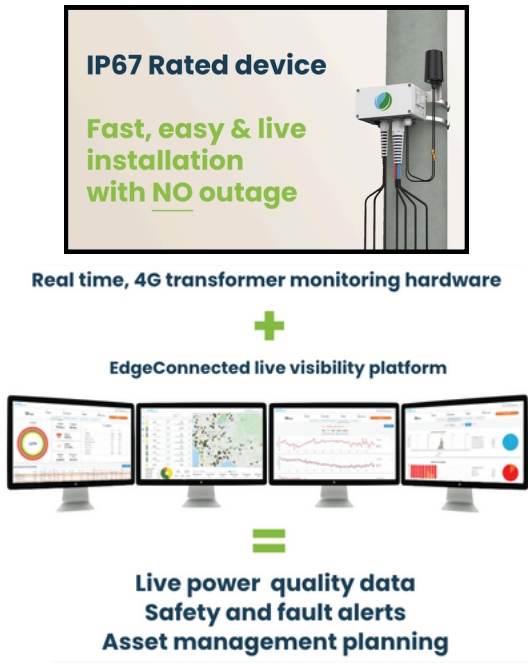
A Proven Solution Delivering Value Across Australia

- **NPV of \$55.9M** for **Endeavour Energy** in AER-approved grid-wide LV monitoring program
- **Reduced CAPEX from \$6.5M to \$2.5M** for new electric bus depot connection in Western Sydney
- Permanent monitoring drives **OPEX savings of \$3.5M** (2020-2025) for **SA Power Networks**
- **\$10M** of avoided traditional upgrade costs for **Essential Energy**

Edge Zero Addresses These Challenges Head On

<p>Real-time, Intuitive Data</p> <p>Accurate 1-minute data streams to provide live views, support predictive maintenance & compliance and improve reliability</p>	<p>Turn DER into Grid Assets</p> <p>Understand where DER can safely interconnect and where additional load management optimization may be necessary</p>	<p>Achieve Results For Less Investment</p> <p>Recognize 95% of the benefits of AMI 2.0 at a small fraction of the cost, all ready-to-install without lengthy grid resource plans</p>	<p>Enhance Operational Efficiencies</p> <p>Enable proactive maintenance, omit unnecessary truck roles and right-size equipment to your needs with real-time network data</p>	<p>Mitigate, Optimize & Alert</p> <p>Leverage data on aging factors, power quality and fault detection to reduce hazard risk; optimize customers' safety in case of emergency</p>
--	--	---	---	--

Edge Zero's Solution Set



EdgeSensor (600 Series)

Grid and Transformer Monitoring Unit

The Edge transformer monitor is a compact grid power quality monitor that incorporates Edge Zero grid edge technology. It is an intelligent, software-driven, full power quality grid monitoring sensor that reports live transformer data and status alarms.

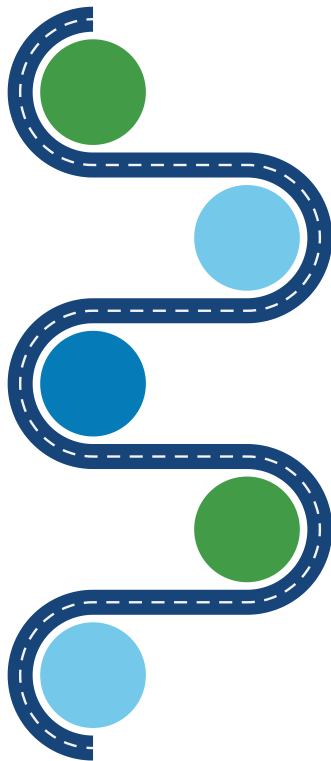
EdgeConnected™

Low Voltage Monitoring Platform

Edge Zero gives grid operators, distribution utilities, and embedded network operators the tools to maintain reliability and power quality during wildfire season. EdgeConnected utilizes live data from low-cost, simple-installation EdgeSensors to provide a smart digital twin of network power flows and asset performance.

Actively Supported Pilot Programs

Six-month, low-cost pilot programs enable utilities to test the **immediate value delivered** across departments and prepare for scale. An **actively supported program**, we'll be with you every step of the way.



1. Concept

Detailed Overview & Proposal

2. Design

Design Workshop and Implementation Plan

3. Delivery

Equipment Supply, Onboarding and Ongoing Support

4. Data Collection

Operational Pilot with Ongoing Reporting

5. Evaluation

Data-rich End of Pilot Report and Pathway to Scale