

PowerMap

A first-of-its-kind public data tool, PowerMap offers dynamic visualizations and analytics for precise monitoring and decision-making. Using a live dataset, PowerMap displays energy flow, identifies issues and optimizes grid management. **Leverage PowerMap to envision low voltage network visibility on your grid,** understand how live grid data can integrate with your existing systems and capture savings, like CO₂ to attribute to programs like conservation voltage reduction (CVR) in your territory.

Live Energy Data to Support Grid Reliability

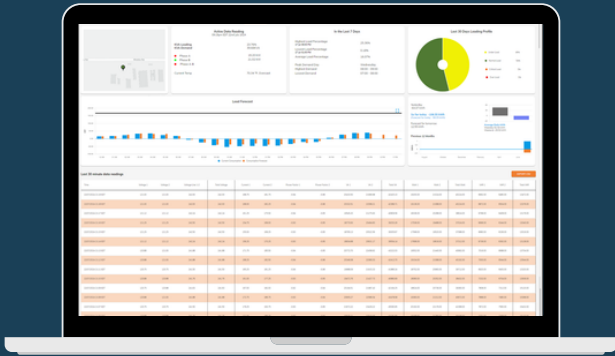


- **Map Overlays:** Display of transformer locations, color-coded to indicate loading status, voltage performance and power flow direction.
- **Loading Table:** Detailed tables list transformer assets with key metrics such as time spent in reverse power flow and average loading over time.
- **Summary Metrics:** Visual representations display how assets perform in real-time, all alongside weather forecasts for operational context.
- **Data Analysis:** Time series graphs are available for all recorded measurements, such as voltage, current and total harmonic distortion.
- **Timescale Control:** Distinct time interval control aids in detailed power usage analysis and grid management.
- **Forecasting:** Understand asset performance and predict future performance through detailed forecasting of all available power metrics.



Use PowerMap to explore a live dataset and see real-time grid insights in action. Like what you see? Partner with Edge Zero to design a pilot program tailored with even more data specific to your distribution grid.

More Live Energy Data at Your Fingertips



- **Active Data Readings:** Real-time metrics such as kVA loading, voltage, power factor and temperature.
- **EV Hosting Capacity:** Display availability of charging capacity based on real load data.
- **CVR Calculations:** Determine quantifiable benefits of CVR programs relating to load reduction, monetary value and CO₂ reduction.

- **Average Daily Consumption Profile:** Daily energy consumption data, comparing weekday and weekend usage.
- **Maximum Percentage Loading Profile:** Calendar-style grids, color-coded to reflect each transformer's load percentage, highlighting periods of normal operation, underloading, or potential overloading.



Your Data, On Demand: Fully Supported Pilot Programs

Tailor Edge Zero's complete solution to your distribution network for even more visibility



Scan to Learn More
About PowerMap

- 1 Concept:** Detailed Overview & Proposal
- 2 Design:** Design Workshop and Implementation Plan
- 3 Delivery:** Equipment Supply, Onboarding and Ongoing Support
- 4 Data Collection:** Operational Pilot with Ongoing Reporting
- 5 Evaluation:** Data-rich End of Pilot Report and Pathway to Scale